



CathexisVision[®]

Video Surveillance Management Solutions



CathexisVision 2019

Features

CATHEXISVISION 2019 COMES PACKED WITH POWERFUL FEATURES

The latest CathexisVision software release offers several new features, enhancements to existing features, and provides a greater emphasis on privacy and security. Cathexis continues striving to provide world leading software by using innovation to improve effectiveness and flexibility for all market sectors. Below is a summary of some of the features that have been included:

OBJECT CLASSIFICATION / NEURAL NETWORKS

CathexisVision Video Analytics now uses Neural Network technology to enable us to classify objects (e.g, humans, vehicles, animals, etc). When added to our already sophisticated video analytics suite (which includes line-crossing, speed detection, loitering, counting, and many others), the object classification enhances our ability to create a more accurate decision-making environment, dramatically reduce false alarms and improve the effectiveness of the system.



In addition to real-time alerts, we also provide an Object Classification database which allows users to search for objects, associated metadata and video footage for effective forensic analysis.

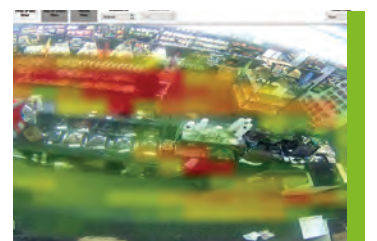
CYBER SECURITY - ENCRYPTION

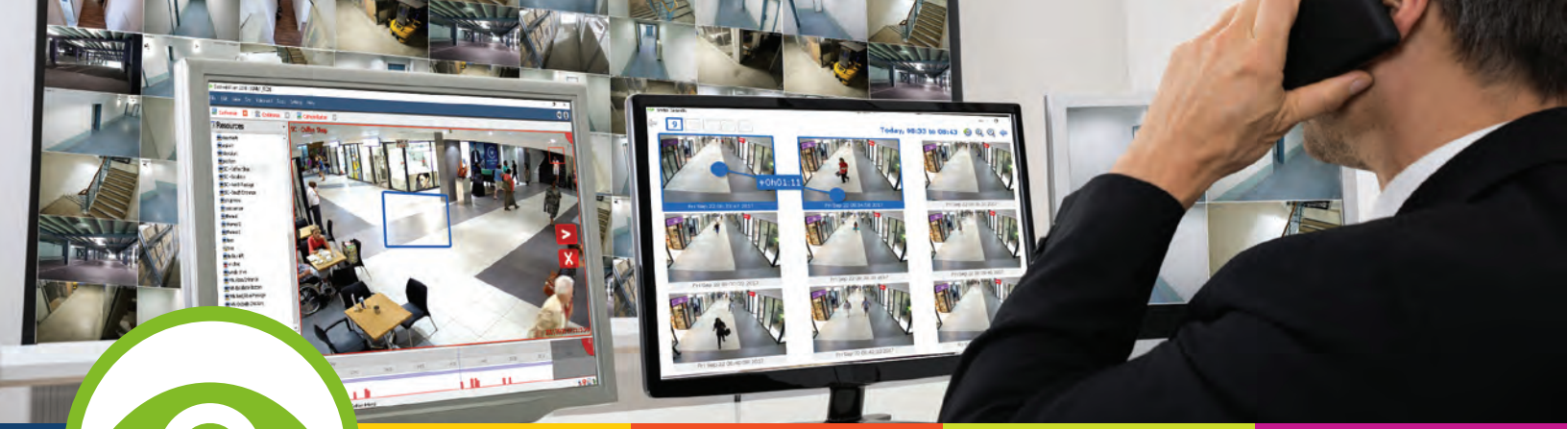
In accordance with our ongoing quest to ensure system and data integrity, we have added improved Cyber-security measures to our system. In addition to the existing secure, internal systems communication encryption, CathexisVision now supports encryption for all external site connections and offers four, selectable encryption levels. We have also added a secure I.P camera connection and data encryption to further enhance security.



HEATMAPS

Heat-maps can be applied as overlays to selected cameras for a quick overview of areas of motion within a camera view. The heat-map shows a colour-map overlay on the video depicting the amount of motion within that camera view over a selected period of time. This feature is ideal for retail environments, traffic, carparks, public facilities and many other areas where you may need awareness of different traffic densities within a camera view.





CathexisVision 2019

Features

BOOKMARKING

Our new bookmarking feature provides a simple way to “bookmark” and recall specific moments or incidents that are identified on live or pre-recorded footage. This feature enables you to name the bookmark and save it in our bookmark database. It then enables you to find the bookmark with some easy search filters and return to the precise “bookmarked” moment in time, where it will present you with the exact camera layouts that you were viewing at that time.

This feature forms part of our growing feature set that is designed to improve overall effectiveness and efficiency in the control room environment.



REFERENCE IMAGE MANAGEMENT

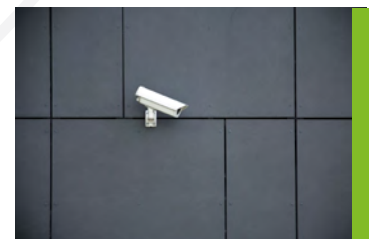
This feature provides the ability to ensure that cameras are always showing the desired view, minimising the risk of deliberate, or inadvertent, camera tampering or position shifts. Any movement of the camera or change in the camera view against a reference image will be displayed along with the percentage difference.

Our sophisticated Adaptive Pattern Matching algorithm ensures that even in variable environmental conditions the reference image comparisons are accurate. This means that if a camera reference image is captured in the daytime, the algorithm will “adapt” when comparing the view against a night-time image.



CAMERA INTEGRATIONS:

We have added more camera integration support to the 1000's of cameras that we already support. Cathexis has added over 400 new IP Camera integrations, including cameras from the following brands; Arecont, ARH, Axis, Avtech, Bosch, Cisco, CP Plus, Dedicated Micros, Mobotix, Pelco, Sightlogix, TruVision, Uniview, Vivotek.





CathexisVision 2019

Features

3RD PARTY INTEGRATIONS:

As part of our ongoing strategy to add more value to our solutions, we have added a whole new host of third party to an increasingly impressive list of integrations:

These additional third-party integrations include:

- Dahua - ANPR
- Dedicated Micros - DVR
- Gallagher - Fence Management/Access control
- Hikvision - ANPR
- Honeywell – Fire panels
- JVA Security Systems - Fence Management
- Maxxess – Access Control
- Lenel OnGuard – Access Control
- Paradox – Alarm Panels
- Risco – Alarm Panels
- TruVision - ANPR

CathexisVision consistently boosts its offering by adding an extended range of new capabilities. It assists end-users to make key-decisions based on intelligent information processing, automates specific actions in the control room environment and ultimately provides enhanced effectiveness and efficiency for a superior return-on-surveillance investment.



ADVANCED ACCESS & SECURITY SOLUTIONS

www.p-tron.com