

DOOR FURNITURE



PT-FR02: Resettable Green Break Glass Unit

- Mechanical emergency door release switch
- Green surface mount box with conduit knockout
- Manual key resettable actuator
- Push point activation
- Hinged clear plastic for protective cover



PT-BGU004A: Green Break Glass Unit

- Mechanical emergency door release switch
- Green surface mount box with conduit knockout
- Manual key resettable actuator
- Break-glass activation
- Hinged clear plastic for protective cover
- Dimensions: 85mm (H) x 85mm (W) x 52mm (D)



PT-BGU004R: Fire Red Break Glass Unit

- 2 Piece manual emergency fire red call point
- Manual key resettable actuator
- Break-glass activation
- Hinged clear plastic for protective cover
- Dimensions: 85mm (H) x 85mm (W) x 52mm (D)



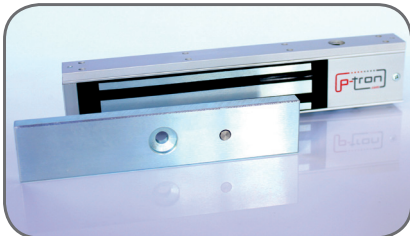
TS-77: Medium Duty Door Closer

- Fully controlled closing cycle
- Closing speed variable by valve adjustment
- Hold-Open Option available
- Weight: 1.7kg (Approx)
- Dimensions: 180 (L) x 43 (H) x 65 (D)
- Surface Finish for optimum corrosion protection



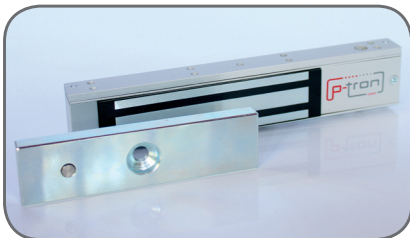
LK-13: Heavy Duty Door Closer

- Door closer for left or right opening swing doors
- Door width 1400mm to 1600mm
- Adjustable swing arm for a variety of installation applications
- Variable speed, angle and tension control



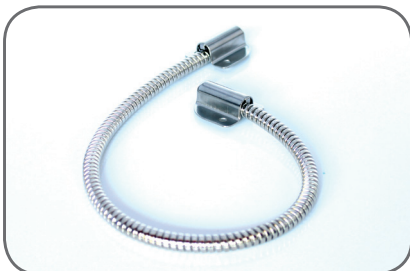
PT-MAG150CTC: 300LED Maglock (150kg)

- 150kg Holding force
- Built-in LED indicator for Door Monitoring
- Magnet Size: 160 (L) x 38 (W) x 21 (D)
- Armature Size: 130 (L) x 32 (W) x 10 (D)
- Voltage / Current: 12 VDC / 370mA or 24 VDC / 185mA
- Weight: 1.0kg (Approx)



PT-MAG300CTC: 600LED Maglock (300kg)

- 300kg Holding force
- Built-in LED indicator for Door Monitoring
- Magnet Size: 250 (L) x 48 (W) x 25 (D)
- Armature Size: 180 (L) x 38 (W) x 11 (D)
- Voltage / Current: 12 VDC / 480mA or 24 VDC / 240mA
- Weight: 2.0kg (Approx)



PTDL-010: Small Metal Door Loop

- Door loop for exposed mounting
- Dimensions: 450 x 8mm
- Alloy material with thick ripple tube for cabling
- Chrome metal finish
- Weight: 0.2kg



PTDL-015: Large Metal Door Loop

- Door loop for exposed mounting
- Dimensions: 450 x 12.7mm
- Alloy material with thick ripple tube for cabling
- Chrome metal finish
- Weight: 0.4kg

marketing@powelltronics.com

+27 11 234 6990 | +27 21 448 0156 | +27 31 312 1405